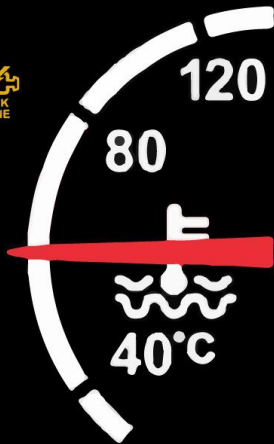


Which Parts of a Car Cause the **CHECK ENGINE LIGHT** to Come On?



Oxygen Sensor

Caused by internal leaks or contaminated fuel



Fuel Cap

Result of a cracked or broken fuel cap or a cap that isn't on fully



Catalytic Converter

Could be caused by a broken oxygen sensor or deteriorated spark plugs



Mass Air Flow Sensor

Result of improperly installed air filter



Spark Plugs

Caused by overheating, old spark plugs or oil contamination



Ignition Coil

Caused by old coils that have degraded over time



Fuel Injector

Result of holes in the injector tip or a clog caused by gasoline impurities



Vacuum Leak

Caused by cracks or holes in hoses or valves



Evaporative Emissions Purge Control Valve

A result of a plugged valve or one that has been stuck open or shut



Ignition Wires

Likely caused by cracked or broken-down wires



Engine Thermostat

Caused by poor maintenance of excess calcified deposits



Low or Dirty Oil

Can be caused by low oil levels or oil impurities